



2nd SEDAN International Conference

Sensations, Emotions, and Pain in Neurodevelopmental Disorders

FROM RESEARCH TO CLINICAL PRACTICE

November 15, 2025

9 to 14.30 hours

Auditorium of Hospital Universitario Son Espases.
(Carretera de Valldemossa, 79, Nord. Palma)

ORGANIZE



COLLABORATE



Universitat
de les Illes Balears

Facultat
d'Infermeria
i Fisioteràpia



Col·legi Oficial de Fisioterapeutes
de les Illes Balears



Institut d'Investigació Sanitària Illes Balears



bioib

2nd SEDAN International Conference

Sensations, Emotions, and Pain in Neurodevelopmental Disorders

FROM RESEARCH TO CLINICAL PRACTICE

November 15, 2025

9 to 14.30 hours (CET)

Auditorium of Son Espases University Hospital.
(Carretera de Valldemossa, 79, Nord. Palma)

FREE REGISTRATIONS:

Open to the general public.

Please register here by November 10

Limited in-person capacity (287 people)

STREAMING EVENT LINK:

Those registered will receive it one week before the event.

The livestream of the presentations in Spanish will be translated into English.



Cofinanciado por
la Unión Europea
Cofinançat per
la Unió Europea



MINISTERIO
DE HACIENDA



Fondos Europeos
Fons Europeus



Govern de les
Illes Balears
Vicepresidència Primera i Conselleria
d'Economia, Hisenda i Innovació

This event is part of the R&D&I project PID2023-152387NB-100, funded by MICIU/AEI/10.13039/501100011033 and "FEDER A way of making Europe", "FEDER/EU".



ORGANIZE



COLLABORATE



Universitat
de les Illes Balears
Facultat
d'Infermeria
i Fisioteràpia



Col·legi Oficial de Fisioterapeutes
de les illes Balears



POSTER CONTEST

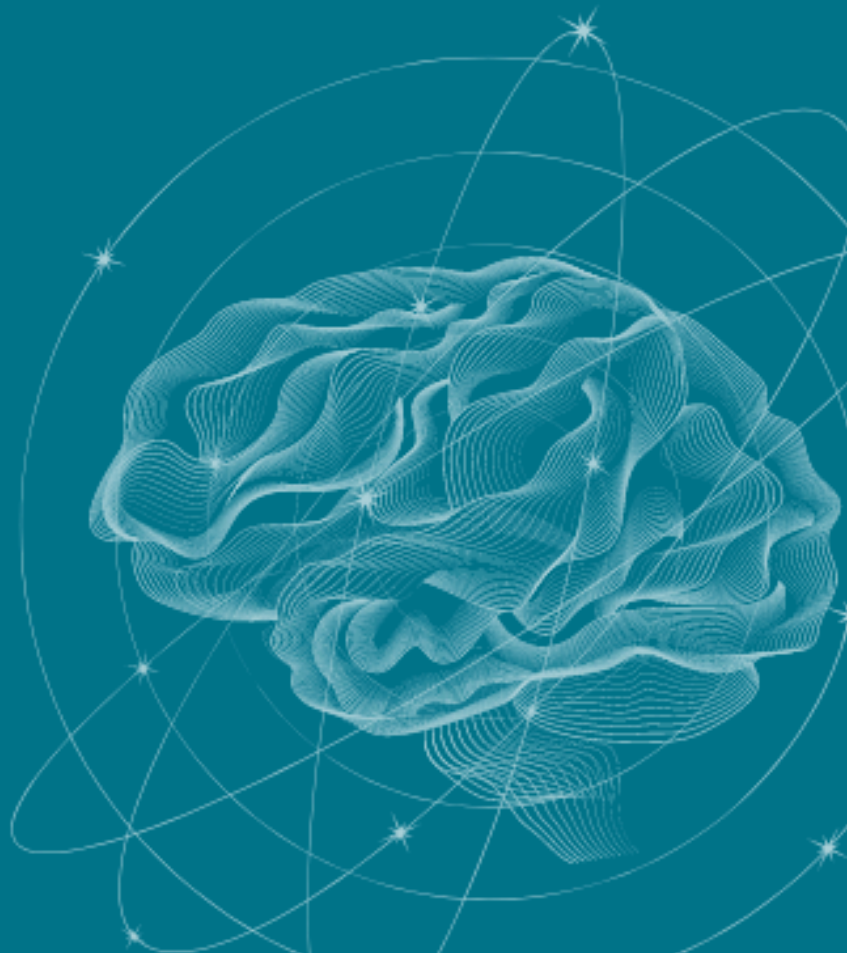
Poster submission for competition

to alvarosabater@spaceib.org

before November 1, 2025

AWARD FOR THE BEST POSTER

200€



ORGANIZATION

ORGANIZING COMMITTEE

President:

- Dr. Álvaro Sabater-Gárriz

Members:

- Inmaculada Moreno Marín
- Dra. Inmaculada Riquelme Agulló
- Dra. Olga Velasco Roldán
- Dra. Nuria García Dopicó
- Patricia Álvarez Segura

SCIENTIFIC COMMITTEE

President:

- Dr. Álvaro Sabater-Gárriz (Universitat de les Illes Balears)

Miembros:

- Dra. Esther Córdoba Borrás (Neuropediatra Hospital Universitari Son Espases)
- Dr. Pedro Montoya Jiménez (Catedrático Universitat de les Illes Balears)
- Dra. Inmaculada Riquelme Agulló (Catedrática Universitat de les Illes Balears)
- Dra. Pau Martínez Bueso (Universitat de les Illes Balears)
- Dr. José Joaquín Cerón Madrigal (Catedrático Universidad de Murcia)
- Dr. Fusao Kato (Profesor Emérito Jikei Medical School, Tokio)
- Dra. Yukari Takahashi (Jikei Medical School, Tokio)
- Dr. Kari Vehmaskoski (JAMK University of Applied Sciences, Finlandia)
- Dra. Samar Hatem (Vrije Universiteit Brussel, Bélgica)
- Dra. Yannick Bleyenheuft (Université Catholique de Louvain, Bélgica)
- Dra. Zara Pons Vila (Clúster BIOIB)
- Dra. Tamara Biedermann Villagra (ASPACE Cataluña)
- Sra. Elvira Loreto Ripoll Santandreu (Col·legi Oficial de Fisioterapeutes de Balears)

PROGRAM

INAUGURATION

9:00 With the attendance of authorities

OPENING LECTURE

9:30 The mystery of neuroplasticity

- Dr. Esther Córdoba Borrás (Specialist in Pediatrics, Neuropediatrics Unit, HUSE Son Espases)

PONENCIAS

10:00 Reciprocal influence between bodily sensations and emotions in childhood. Implications for assessment and intervention in children with neurodevelopmental disorders

- Inmaculada Riquelme Agulló (Full Professor, Universitat de les Illes Balears)
- Ruth Pons Moll (FPI Research Fellow, Universitat de les Illes Balears)

10:30 National study on the aging process in Cerebral Palsy: Psychosocial implications

- Nacho Pérez Figueroa (Manager, Federación ASPACE Galicia)

11:00 Coffee Break. Poster Session

11:30 PainScan CP: Design of a mobile application for automated facial recognition based on artificial intelligence to identify pain in people with cerebral palsy and severe communication limitations

- Dr. Álvaro Sabater-Gárriz (Associate Professor at the Universitat de les Illes Balears and Training & Research Advisor, Fundació Aspace Balears)

PROGRAM

12:00 Pain is not merely a result of tissue or nerve damage but can be strategically generated or amplified by the brain to increase survival

- Prof. Dr. Fusao Kato (Professor Emeritus, Jikei Medical School, Tokyo, Japan)

12:30 Group psychotherapeutic experience in aspace catalunya with high-complexity congenital profiles

- Laura Estrela Bañuls and Oscar García García (Outpatient Care Service, Fundació Aspace Catalunya)

13:00 Nursing role in the management of pediatric pain and spasticity: Baclofen pump and botulinum toxin

- Mónica Pilar González Giménez and Esther Benito Ruso (Nurses, Pediatric Palliative Care and Complex Chronic Conditions Unit, HUSE Son Espases)

13:30 Introduction to non-invasive brain stimulation in neurodevelopmental disorders

- Prof. Dr. Pedro Montoya Jiménez (Full Professor, Universitat de les Illes Balears)

14:00 Best poster award ceremony

14:20 Closing

